



## Automation Anywhere Create Folder Structure Bot

**Readme**

---

**Version 1.0**

**23/02/2020**

## Table of Contents

<b>1. Introduction .....</b>	<b>3</b>
1.1 Overview .....	3
1.2 Common Use cases.....	5
<b>2. Requirements &amp; Prerequisites.....</b>	<b>6</b>
2.1 System Requirements.....	6
2.2 Prerequisites .....	6
2.3 Security Measures .....	6
2.4 Disclaimers .....	6
<b>3. Getting Started.....</b>	<b>7</b>
3.1 Skill Matrix .....	7
3.2 Installation Hierarchy .....	7
3.3 Quick Start .....	8
3.3.1 Setup .....	8
3.3.2 Configuration .....	8
3.3.3 Running the Bot.....	10
3.3.4 Copy bot dependencies into the target folder structure .....	10
<b>4. Reports .....</b>	<b>12</b>
<b>5. Logs .....</b>	<b>13</b>
<b>6. Troubleshooting &amp; Support .....</b>	<b>14</b>
6.1 Support .....	14
6.2 FAQs.....	14
<b>Appendix A: Record of Changes .....</b>	<b>15</b>
<b>Appendix B: Acronyms.....</b>	<b>16</b>
<b>Appendix C: References.....</b>	<b>17</b>

# 1. Introduction

This document contains all essential information for the user to make full use of the Automation Anywhere Create Folder Structure (CFS) Bot. This manual includes a description of the functions and capabilities and step-by-step procedures for setup & configuration of the bot.

## 1.1 Overview

Creating Automation Anywhere mandatory folder structure for uploading into AA marketplace or for running it locally, can quickly become an overwhelming activity especially for people who have just started on their automation journey or for a business user who has not previously had deep experience with technology.

If you belong to one of the above categories of users or are even a seasoned technical automation expert, this bot is meant for you. CFS bot allows you to focus on the business logic of the bot by automating the manual repetitive task of creating the standard folder structure and files. The standard folder structure is required to either run the bot locally or upload the bot in the Automation Anywhere marketplace (a.k.a BotStore). CFS bot goes a step ahead and even provides the ability to create additional custom folders required for your project in addition to the standard folders and files.

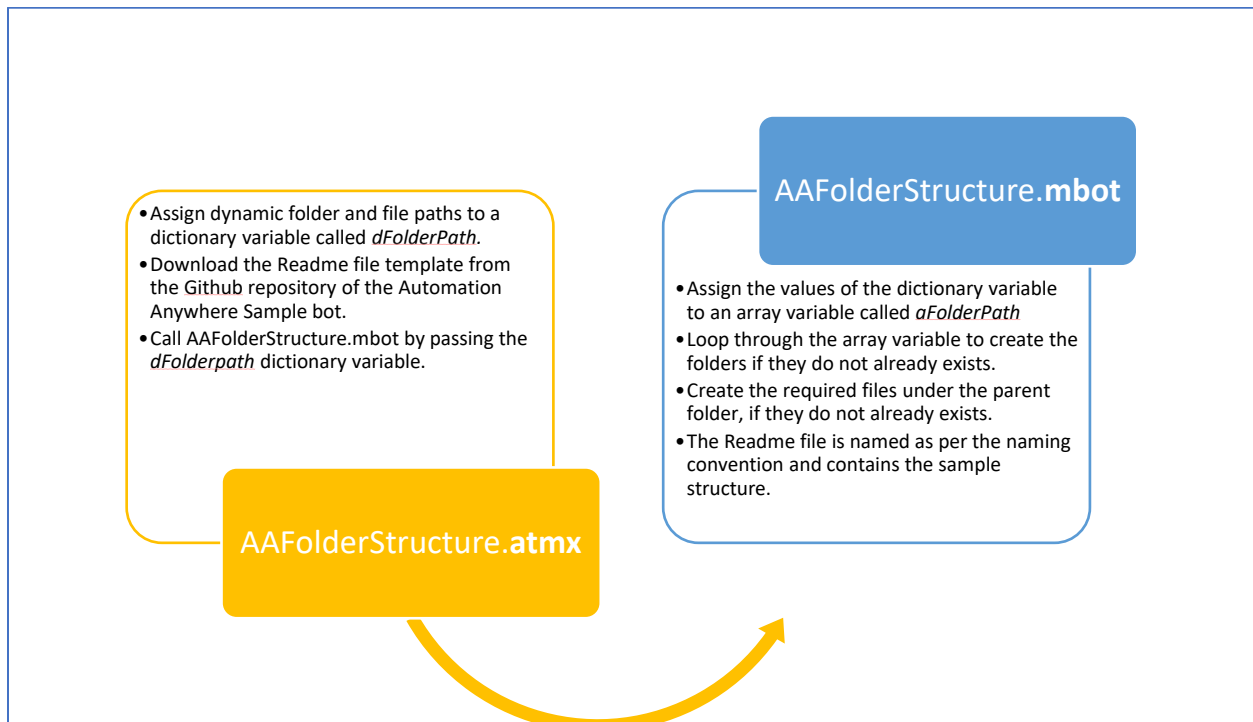
CFS bot is really easy to use and the end to end walkthrough of the bot and the process of including it in existing or new projects is given below:

- For any automation project, big or small, Automation Anywhere recommends its users to follow certain standards in relation to naming variables, to avoid hard coding by using variables extensively, making use of reusable components by leveraging metabots, enabling bots to run on different computers and so on. The complete list of these standards can be found on Automation Anywhere [online help](#).
- For uploading your bots in Automation Anywhere marketplace, the developer needs to follow a mandatory standard vis-à-vis creating folder structure and files in a specific format. The required structure is created under the path **\$AAApplicationPath\$\Automation Anywhere\ My Tasks\Bot Store\YourProjectName** and is shown in Fig 1 given below:

Name	Date modified	Type	Size
Error Folder	2/24/2020 6:18 PM	File folder	
Input Folder	2/24/2020 6:18 PM	File folder	
My MetaBots	2/24/2020 6:18 PM	File folder	
My Tasks	2/24/2020 6:18 PM	File folder	
AACreateFolderStructure-Neevista-Readme.docx	2/25/2020 2:59 AM	Microsoft Word D...	69 KB
ATMX Protection Info.txt	11/23/2019 3:39 AM	Text Document	0 KB
Best Practice Example - README Individual Bot.pdf	11/23/2019 3:39 AM	Chrome HTML Do...	1,292 KB
Best Practice Example - README Master Task Bot for Digital Worker.pdf	11/23/2019 3:39 AM	Chrome HTML Do...	1,332 KB
License Info.txt	2/18/2020 4:24 PM	Text Document	1 KB
MBOT Protection Info.txt	2/18/2020 4:28 PM	Text Document	0 KB

Fig 1

- These folders basically store the files that are required by the bot to function properly. In addition to that, there are some additional files required for your bot which includes:
  - ReadMe file – The one that you are currently reading.
  - License Info – Contains a global ID that uniquely identifies the bot in Automation Anywhere marketplace. You get a global ID once you submit the idea for your bot on Automation Anywhere website.
  - ATMX Protection Info – This file includes the names of all task files in your project that need to be protected. This is normally required if you are planning to upload a paid bot.
  - MBOT Protection Info – Same as ATMX protection info except this file stores the names of metabots used in your project for which the code needs to be protected.
- It is recommended to follow the folder structure standard even when you are planning on running your bot locally to ensure consistency and avoid rework at a later point in time.
- The high level flow of the logic that resides in bot is given below in Fig 2:



**Fig 2**

## 1.2 Common Use cases

A standard folder and file structure is applicable to all bots and digital workers created using Automation Anywhere platform. Moreover, creating the standard structure for every new bot is a repetitive task. Therefore, it is ideal to use this bot to automate that mundane process. CFS bot can be used in the following two ways:

- The AAFolderStructure.atmx can be used as a shell task file for a new project by renaming it as per the requirement of your project.
- Alternatively, AAFolderStructure.mbot can be included in the existing task file (\*.atmx) for the new project. In this case, the first 1-13 lines of the AAFolderStructure.atmx task bot will also need to be copied into the existing task file (\*.atmx) for the new project. This step is required to provide initial values for the folders paths that need to be created by AAFolderStructure.mbot

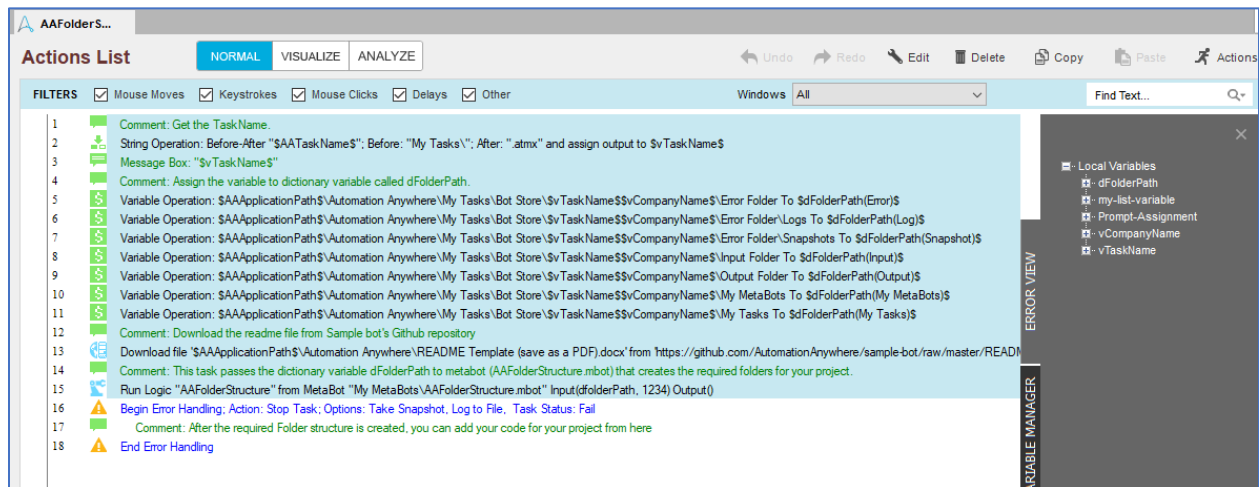


Fig 3

## 2. Requirements & Prerequisites

---

### 2.1 System Requirements

For the PC or server where the bot needs to run:

- RAM: 8GB or higher
- PROCESSOR: Intel Core i5 or higher and equivalent for any other OS
- Hard Disk: Up to 2GB of overall free space in the AA Client installation drive.

Reference here for [Enterprise Client & Control Room system requirements](#).

### 2.2 Prerequisites

Enterprise Client 11.x prerequisites can be found by [clicking here](#).

Enterprise Control Room 11.x prerequisites can be found by [clicking here](#).

### 2.3 Security Measures

This bot doesn't store any user name or passwords and has been built as per the quality standards recommended by Automation Anywhere.

### 2.4 Disclaimers

It is essential that the user of this bot reads the Readme file prior to running the bot to avoid any inadvertent changes to the folder structure of other bots in the environment. For the same reason, it is also recommended that this bot must be reviewed by the platform administrator prior to making it available for general use.

## 3. Getting Started

### 3.1 Skill Matrix

The functionality of the Bot has been divided into set of skills. Below is an overview of how the task bots and metabots map to these skills:

Skill	Task Bot Files	MetaBot Files
Assign dynamic paths to the task bot for the creation of standard folder structure	AAFolderStructure.atmx	AAFolderStructure.mbot

### 3.2 Installation Hierarchy

Once the bot is downloaded and installed, the installer creates the files in the folder structure as shown below.

Folder Structure	Description
<b>&lt;AA Application Path&gt;</b>  <b>1. My Tasks</b> <b>1.1. Bot Store</b>  <b>1.1.1. AAFolderStructure-Neevista</b>  ➤ <b>Error Folder</b> <ul style="list-style-type: none"> <li>• Logs               <ul style="list-style-type: none"> <li>o Error logs Month-Day-Year Hour Min Sec.txt</li> </ul> </li> <li>• Snapshots               <ul style="list-style-type: none"> <li>o Error Snap Month-Day-Year.png</li> </ul> </li> </ul> ➤ <b>Input Folder</b>	<b>&lt;AA Application Path&gt;</b> is the location of the AA application files stored on your computer.  <b>1. My Tasks</b>  <b>1.1 Bot Store</b>  Bot Store Folder contains the Bot Name Folder which the installer creates while installation of the Bot from the marketplace.  <b>1.1.1 AAFolderStructure-Neevista</b>  This folder gets created by the installer and contains files and folders needed for the bot execution.  ➤ <b>Error folder</b> is where logs and snapshots of screens will be placed if something goes wrong with the bot during execution  ➤ <b>Input Folder</b> is where the input files that the bot needs for execution of the use case is saved

<ul style="list-style-type: none"> <li>➤ <b>Output Folder</b></li> <li>➤ <b>My Tasks</b> <ul style="list-style-type: none"> <li>• AAFolderStructure.atmx</li> </ul> </li> <li>➤ <b>My Metabots</b></li> </ul> <p><b>2. My MetaBots</b> AAFolderStructure.mbot</p>	<ul style="list-style-type: none"> <li>➤ <b>Output Folder</b> is where the output files that the bot generates after processing are saved</li> <li>➤ <b>My Tasks</b> folder contains all the Developed Platform Source Code</li> </ul> <p><b>2. My MetaBots</b> folder contains the Developed Metabots needed for the bot execution.</p>
---	--

## 3.3 Quick Start

### 3.3.1 Setup

CFS bot does not require the user to follow any setup steps apart from downloading from the Automation Anywhere Marketplace and installing it.

### 3.3.2 Configuration

In order to get started with CFS bot does not need any configuration apart from ensuring that the inputs for variables are defined properly. Below is a table that summaries what the variable name is, what it does, and an example of the input & output:

INPUT VARIABLES: Need to be configured by the users for input parameter				
Variable Name	Type	Mandatory (Yes/ No)	Purpose	Example Input
dFolderPath	Text	Yes	dFolderPath is a dictionary variable used to store the paths of standard or custom folders that need to be created for the project. There is a provision to add upto 7 optional custom folders from	<p><b>\$dFolderPath(Error)\$:</b> \$AAApplicationPath\$\Automation Anywhere\My Tasks\Bot Store\\${vTaskName}\${vCompanyName}\Error Folder</p> <p><b>\$dFolderPath(Log)\$:</b> \$AAApplicationPath\$\Automation Anywhere\My Tasks\Bot Store\\${vTaskName}\${vCompanyName}\Error Folder\Logs</p> <p><b>\$dFolderPath(Snapshot)\$:</b></p>



			Custom1 – Custom7. The custom folders can also be created under the standard folder by passing paths in a similar way.	<p>\$AAApplicationPath\$\Automation Anywhere\My Tasks\Bot Store\\${vTaskName}\${vCompanyName}\Error Folder\Snapshots</p> <p><b>\$dFolderPath(Input)\$:</b></p> <p>\$AAApplicationPath\$\Automation Anywhere\My Tasks\Bot Store\\${vTaskName}\${vCompanyName}\Input Folder</p> <p><b>\$dFolderPath(Output)\$:</b></p> <p>\$AAApplicationPath\$\Automation Anywhere\My Tasks\Bot Store\\${vTaskName}\${vCompanyName}\Output Folder</p> <p><b>\$dFolderPath(My Metabots)\$:</b></p> <p>\$AAApplicationPath\$\Automation Anywhere\My Tasks\Bot Store\\${vTaskName}\${vCompanyName}\My MetaBots</p> <p><b>\$dFolderPath(My Tasks)\$:</b></p> <p>\$AAApplicationPath\$\Automation Anywhere\My Tasks\Bot Store\\${vTaskName}\${vCompanyName}\My Tasks</p>
vTaskName	Text	Yes	The name of your bot (*.atmx file)	<b>YourProjectName</b>
vCompanyName	Text	Yes	The name of the organisation that the bot belongs to. This is name is used in creating the parent folder of the zip package that is uploaded on Automation anywhere website during bot store submission process.	<p><b>-YourOrganisationName</b></p> <p>Where YourOrganisationName is the name of the company. Please note that the company name should be prefixed with hypen sign '-', without the quotes as given above.</p>
vGloablID	Number	No	Global ID is the unique number that identifies your bot on the	<b>1234567</b>

			botstore. Automation Anywhere provides a global ID once you submit an idea for your bot. If you provide global ID as an input to AAFolderStructure metabot, it is automatically included in the license file that gets created as part of the folder structure creation process.	
--	--	--	---	--

### 3.3.3 Running the Bot

As mentioned in section 1.2, CFS bot can be used in two different ways. Once you have figured out the best possible way to suit your scenario, the bot can be run to create the folder structure for your project.

A successful execution of CFS bot will create the required default and custom folder structure required for your project under the **path \$AAApplicationPath\$\Automation Anywhere\My Tasks\Bot Store\**.

### 3.3.4 Copy bot dependencies into the target folder structure

After the required structure is created, all the files required for your project will need to be copied into the newly created folder structure so that the zip package for AA marketplace can be created successfully. The files may include the following –

- \*.atmx file – Copy into the My Tasks folder
- \*.mbot file(s) – Copy into the My MetaBots folder
- Any input files can be copied into Input Folder or any custom folder created underneath it.

The readme file created by CFS bot contains the template of how an AA marketplace bot's readme should look like. The read me file needs to be updated with functional and technical details pertaining to your project.

Once the above steps are completed, the next steps include adding dependencies into you \*.atmx file and creating a zip package for your project as shown in fig 3.

For more details regarding making your bot ready for marketplace deployment, please refer to the following links from the AA online help file.

- [Create a readme file](#)
- [Checklist for bot store submission](#)
- [Create a zip package](#)
- [Github repository for Sample Bot](#)

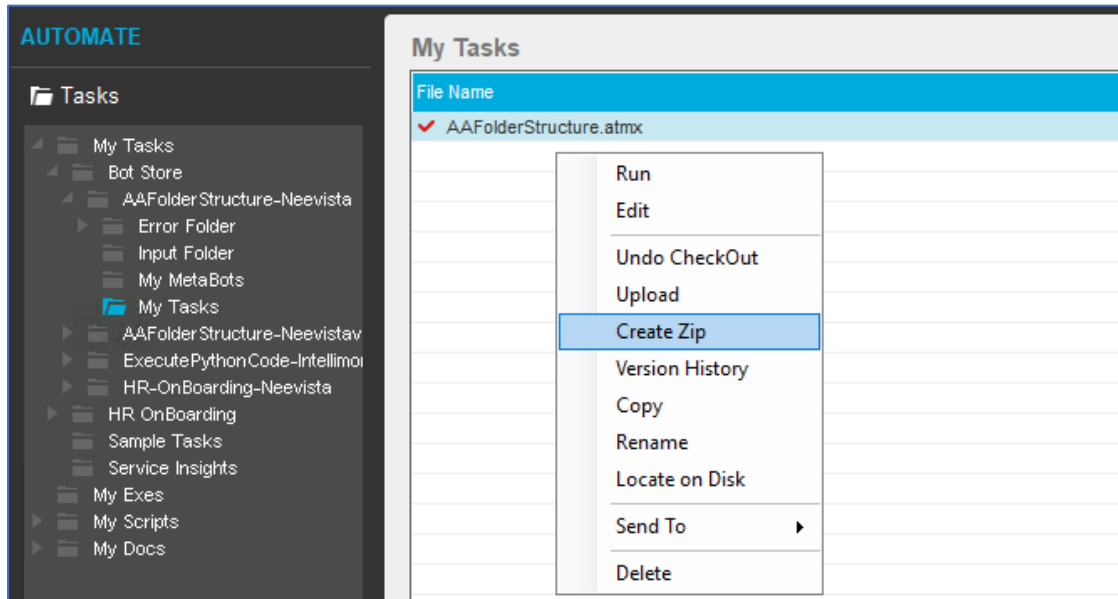


Fig 4

## 4. Reports

---

CFS bot doesn't generate any reports.

## 5. Logs

In case of errors, error logs & screenshots are generated within error Folder -

- My Tasks
  - Bot Store
    - Bot Name
    - Error Folder
      - Logs (Folder)
        - AAFolderstructure.mbot Error Logs Month-Day-Year.txt
      - Snapshots (Folder)
        - AAFolderstructure.mbot Error Snap Month-Day-Year HourMinSec.png

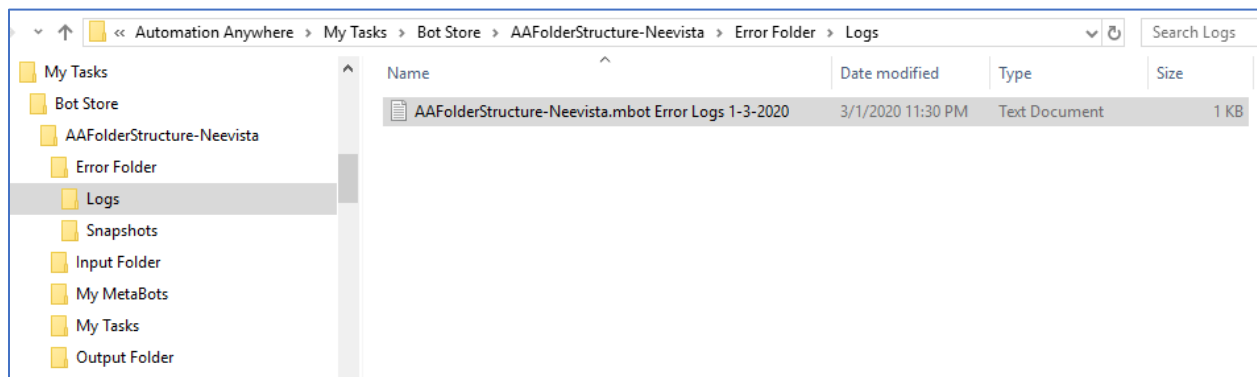


Fig 5

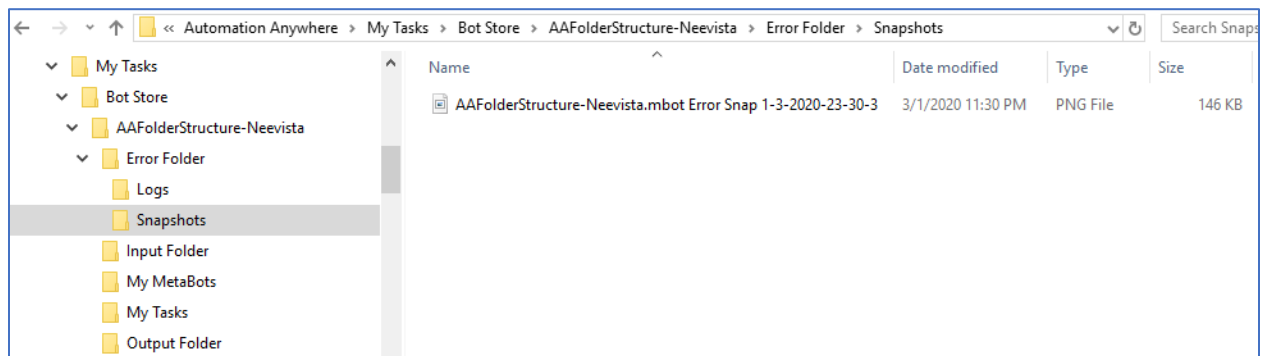


Fig 6

Error Logs will contain the below information –

- Line: \$Error Line Number\$
- Message: \$Error Description\$
- Generated timestamp

## 6. Troubleshooting & Support

---

### 6.1 Support

Free bots are currently not supported directly.

Questions on Bot functionality or feature can also be posted to our Community site Apeople or directed to [enquiry@neevista.com](mailto:enquiry@neevista.com).

Automation Anywhere provides a product documentation portal which can be accessed for more information about AA's products and guidance on building bots and digital Workers.

### 6.2 FAQs

Not Applicable

## Appendix A: Record of Changes

No.	Version Number	Date of Change	Author	Notes
1	1.0	27-Feb-2020	Gaurav Sarin	

## Appendix B: Acronyms

No.	Acronym	Description
1	CFS	Create Folder Structure
2	AA	Automation Anywhere



## Appendix C: References

No.	Topic	Reference Link
1	For all your intelligent automation needs or enhancements required for CFS bot, Please get in touch with Neevista by clicking on the reference link given.	Click <a href="#">here</a>