



A2019 – Create Line charts with Python Bot

Readme

Version 1.0
1/19/2021

Table of Contents

1. Introduction	3
1.1 Overview	3
1.2 Use cases	3
2. Requirements & Prerequisites	4
2.1 System Requirements	4
2.2 Prerequisites	5
3. Getting Started	6
3.1 Quick Start	6
3.1.1 Setup	6
3.1.2 Configuration and Use	6
4. Support & FAQs	12
4.1 Support	12
4.2 FAQs	12
Appendix A: Record of Changes	13
Appendix B: References	14

1. Introduction

This document contains all essential information for the user to make full use of this A2019 Create line charts with Python bot. It includes the description of the functions and capabilities and step-by-step procedure for setup & configuration of the bot.

1.1 Overview

A2019 Create line charts with Python bot can be used to create line charts from data in CSV file.

1.2 Use cases

The key use cases include:

- Analyze financial data
- Plot Employee productivity across sprints
- Analyze sales data

2. Requirements & Prerequisites

2.1 System Requirements

Below are the minimum system requirements for running bots as an Enterprise A2019 (Cloud deployed) or Community Edition user on your local machine.

Hardware Requirements

Device	Processor	RAM	Storage (Free Space)	Network
Machine	Intel Core i5 2.6 GHz	4 GB minimum 8 GB recommended	32 GB	1 GbE
Bot Creator and Bot Runner	No additions to the machine requirements	No additions to the machine requirements	Add 100 through 150 KB per Automation Anywhere script Add 40 through 50 GB per long-term project	No additions to the machine requirements

Browser Requirements

The user interface for Automation Anywhere Enterprise is through a browser. Login to your device then login to Enterprise Control Room through a browser.

Browser	Browser Version	Automation Anywhere plug-in version ²	Supported bot functions by Bot agent version		
Google Chrome ¹	57 or later	11 or 12	2.0.2	1.0.2	1.0.1
Microsoft Internet Explorer	11	N/A	None	Debugger only	All except Credential Vault

(1) Google Chrome re-verification

CAUTION: Google Chrome requires re-verification of permissions when the Automation Anywhere Google Chrome extension (Version 11.3.3 or later) is updated. If prompted, click **Enable this item** in the Google Chrome message. Alternatively, re-enable the extension through [chrome web store](#). Similarly, if you are deploying your Bot Runners from a master image, accept the permission from within that image.

(2) Google Chrome plug-in versions

A2019 supports Chrome plug-in version 11. If you have other versions installed, you might not be able to record tasks using the **Record** feature or **Capture** action. To resolve this issue, do the following:

1. Rename the automation.chrome.agent registry key to automation.chrome.agent.old. The registry key is available at: Computer\HKEY_CURRENT_USER\Software\Google\Chrome\NativeMessagingHosts
2. Disable all other Google Chrome plug-in versions you have installed, except for version 11.

2.2 Prerequisites

- Automation Anywhere Enterprise A2019 setup to run in your machine.
- Python 3.x installed (This bot is tested on Python 3.9)

3. Getting Started

3.1 Quick Start

3.1.1 Setup

- Install the Bot from Bot Store into your Control Room
- Navigate to Line Chart Bot – Automation Anywhere in the Bot Store folder to examine the installed bot.

3.1.2 Configuration and Use

Update the following variables while setting up the Bot or pass the values while initiating the Bot run.

Note: Variables naming setup is referring to a bot which creates charts for different values of 4 stocks over a 12-day time-frame

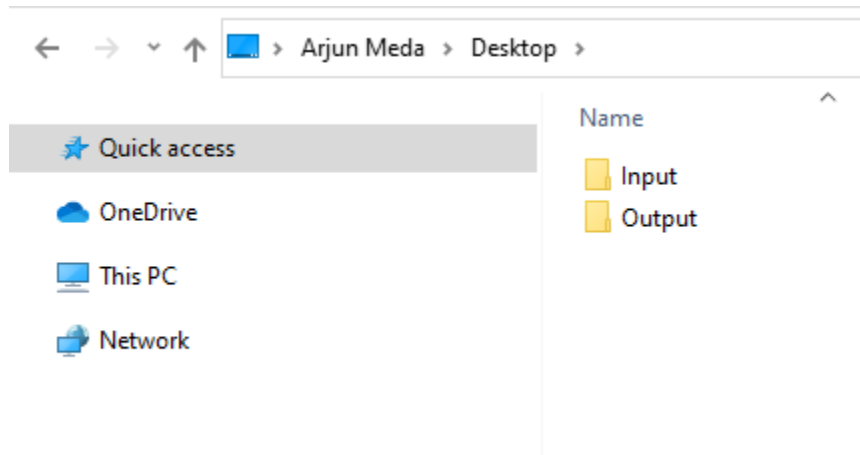
S/N	Variable Name	Variable Type	Function
1	dictInputData	Dictionary	<p>This dictionary variable consists of the following keys:</p> <p>filePath: Enter the base file path within which you will have both Input and Output folders</p> <p>NoOfStocks: This variable mentions the number of stocks in the CSV file</p> <p>title: variable to add title for the chart</p> <p>xlabel – Variable for the label in X-axis</p> <p>ylabel - Variable for the label in Y-axis</p> <p>figwidth – width for the output chart image</p> <p>figheight - height for the output chart image</p>

Sample input data in the Dictionary variable:

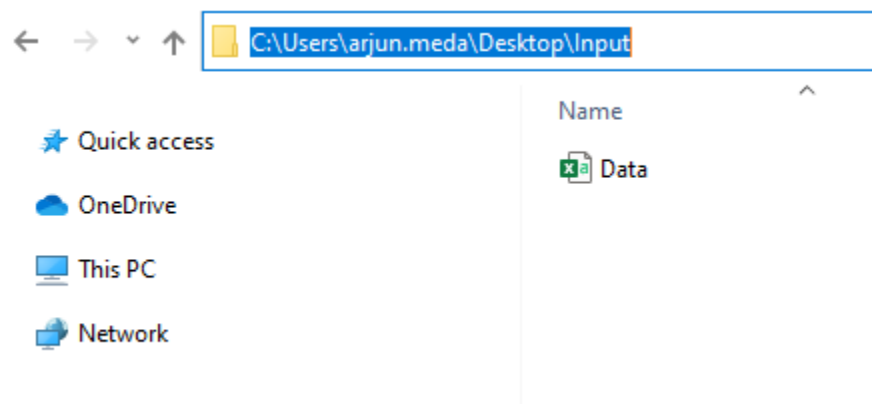
Name	Description (optional)
dictInputData <small>Max characters = 50</small>	 <small>Max characters = 255</small>
Type	Subtype
Dictionary	String
<input checked="" type="checkbox"/> Use as input <input type="checkbox"/> Use as output <input type="checkbox"/> Constant (read-only)	
Default value (optional)	
Key	Value
filePath	C:\\Users\\arjun.meda\\Desktop
Key	Value
NoOfStocks	4
Key	Value
title	Stock price variation
Key	Value
xlabel	Date
Key	Value
ylabel	Stock price in USD
Key	Value
figwidth	20
Key	Value
figheight	10

Create Input and Output folders within the base file path added in the variable.

For ex: My base file path is: C:\Users\arjun.meda\Desktop and the Input and Output folders are available in the Desktop folder.



Place the CSV file within the Input folder.



Bot references the included Python file.

Python script: Open

Opens a Python script

New Python session

🔊 Default (x)

Use the session name to refer to this file in other Python actions

Python

☒ Import existing file

Python file

Control Room file Desktop file Variable

Bot Store\Line Chart Bot - Automation Anywhere\DataVisualization.py × Browse...

☐ Manual input

Enter script here

1

Python runtime version

☐ 2

☒ 3

Use the function name – createPlot (Already mentioned in the Bot) for creating line charts.

Python script: Execute function

Executes a Python function

Python session

Default

(x)

The name you gave the Python session when you opened it.

Enter name of function to be executed

createPlot

(x)

e.g. AddNumbers

Arguments to the function (optional)

dictInputData

(x)

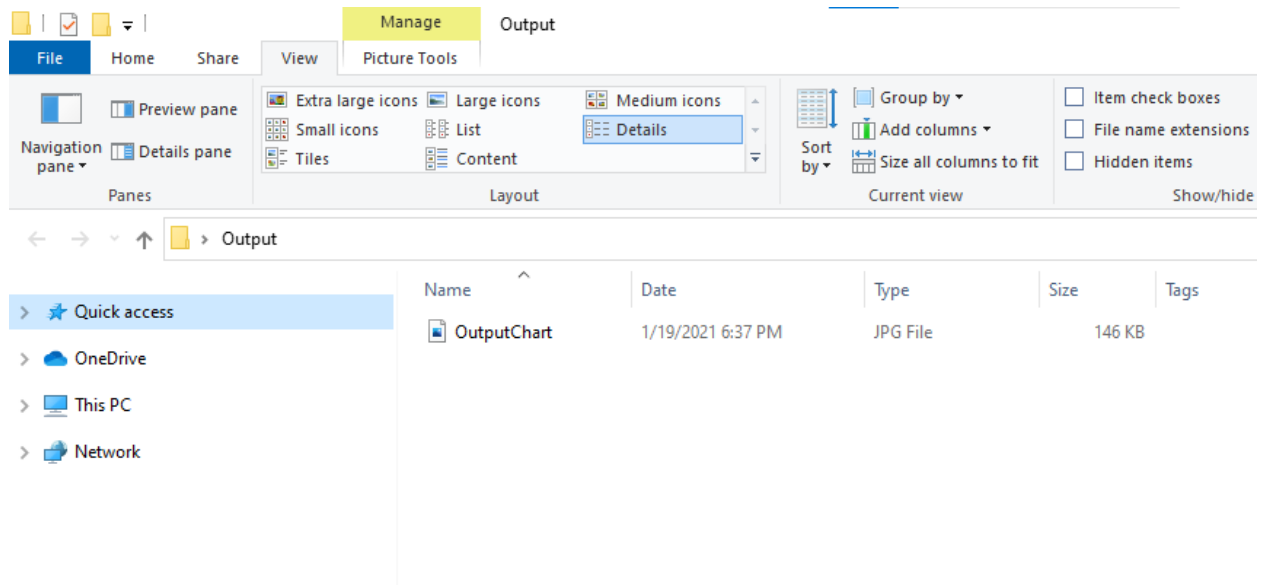
Supports 0 or 1 argument

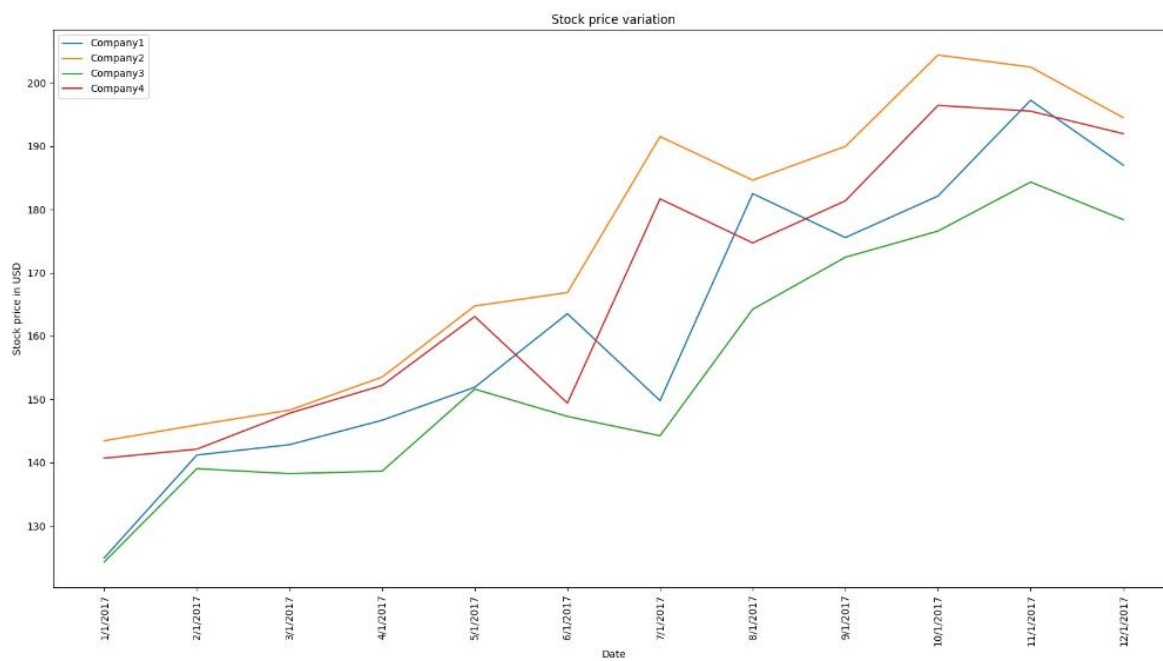
Assign the output to variable (optional)

Choose a variable

(x)

Output chart stored in the Output folder





4. Support & FAQs

4.1 Support

Free bots and packages are not officially supported. You can get access to Community Support through the following channels:

- You can get access to Community Support, connecting with other Automation Anywhere customers and developers on [APeople](#) – the [Bot Building Forum](#), the [Bot Store Support Forum](#), or the [Developers Everywhere Group](#).
- Automation Anywhere also provides a [Product Documentation portal](#) which can be accessed for more information about our products and guidance on [Enterprise A2019](#).

4.2 FAQs

Q: Can I make changes to this bot?

A: Absolutely. Free bots are for you to make use of, customize, and/or include in your builds as you see fit.

Q: Can I upgrade the packages for this bot?

A: Yes – but know that the bot was created/tested on a specific package version. Any modifications to that may result in unexpected outcomes – so make sure to test the bot/subtask after making any package version modifications.

For questions relating to Enterprise A2019: See the [Enterprise A2019 FAQs](#).

Appendix A: Record of Changes

No.	Version Number	Date of Change	Author	Notes
1	1.0.0.0	1/19/2021	Arjun S Meda	Initial version of Bot

Appendix B: References

No.	Topic	Reference Link
1	Overview of Enterprise A2019	Click here
2	Guidance: Building basic A2019 bots	Click here
3	Guidance: Building A2019 action packages	Click here
4	APeople Community Forum	Click here
5	Automation Anywhere University	Click here