

## XL/CSV Header prechecks Automation Anywhere

### Bot Overview

This bot performs the following:

This bot prechecks the headers of input/output files. As per the business requirement if header names or the order of headers get changed BOT will fail and it will impact the business needs. Most of the processes skip the header validations due to the extra coding effort required. This bot will fulfill the requirement.

### Pre-Requisites

- Automation Anywhere Enterprise v11.2

### Installation

- Download the bot from Bot Store.
- Double click on <Bot Name>.msi and follow the installation instructions.

*For first time users, the "Bot Store" folder is created under <AA Directory>/My Tasks (on your local disk).*

***Installer creates the following folder structure with content under the <AA Directory>***

- <AA Directory>
  - My Tasks
    - Bot Store
      - XL\_CSV\_Header Prechecks-AA
        - My Tasks
          - xl\_csv\_headersprechecks\_main.atmx
          - Validate\_Horizontal\_columnheaders.atmx
          - Validate\_Horizontal\_columnheaders.atmx
        - Error Folder
          - Logs (Folder)
            - Error Logs Month-Day-Year.txt
          - Snapshots (Folder)
            - Error Snap Month-Day-Year.png

### How to Use the Bot:

Use the following information to configure.

Parameter Name	Type	Direction	Additional Info
Business input/output files	File	Input	XL or CSV files

Configure input files in the given xml file.



XLReusableBOT.xml

Screens:

Sample Input files

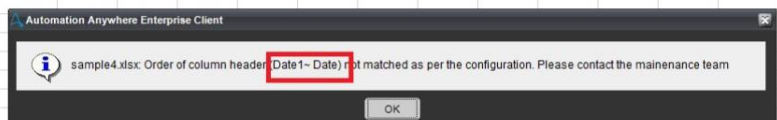
Name	Date modified	Type	Size
 sample1.csv	15-09-2018 0:10	Microsoft Excel C...	1 KB
 sample1.xlsx	07-10-2018 10:19	Microsoft Excel W...	9 KB
 sample2.csv	21-09-2018 0:02	Microsoft Excel C...	1 KB
 sample2.xlsx	07-10-2018 10:21	Microsoft Excel W...	9 KB
 sample3.csv	30-09-2018 15:17	Microsoft Excel C...	1 KB
 sample3.xlsx	07-10-2018 10:18	Microsoft Excel W...	9 KB
 sample4.xlsx	07-10-2018 10:18	Microsoft Excel W...	9 KB

Sample data:

1	Headers			
2	EmpID	Name	Role	Organization
3	111	user1	Roe1	org1
4	112	user2	Roe1	org1
5	113	user3	Roe1	org1
6	114	user4	Roe1	org1
7	111	user5	Roe1	org1
8	111	user6	Roe1	org1
9	111	user7	Roe1	org1
10	111	user8	Roe1	org1
11				



1	Headers	PAN	Aadhar	Passport
2	Name	User1	User1	User1
3	City	City1	City1	City1
4	Mobile	Mobile1	Mobile2	Mobile3
5	Role	Role1	Role2	Role3
6	Department	D1	D2	D1
7	Date1	Date1	Date1	Date2
8				
9				
10				
11				
12				
13				
14				



```
<!-- excel file contains vertical column headers -->
<xl>
<xlpath>C:\Users\arumugam.subramanyam\Documents\Automation Anywhere Files\Automation Anywhere\My Tasks\XL_CSV_Header Prechecks\samples\sample4
<headers>Headers,Name, City,Mobile,Role,Department,Date</headers>
<rowstart>0</rowstart>
<columnstart>1</columnstart> <!-- columns headers are available in the vertical order -->
</xl>
```

## Error Handling

- Each Bot folder contains the below hierarchy.
  - o Error Folder
    - Logs
      - Error Logs Month-Day-Year.txt: In case of any error, this file logs error message along with time stamp
    - Snapshots
      - Error Snap Month-Day-Year.png: In case of any error, this file captures screenshot of error.
- Task Status of bot is set to failed in case of error.