

## SEND SMTP EMAIL WITH TEMPLATE-Readme

### Bot Overview

This bot performs the following:

- Select scenario-based template.
- Construct email body with parameterized placeholders.
- Send email using SMTP mail server.

### Pre-Requisites

- Automation Anywhere Enterprise v11.x
- Outgoing mail server settings updated on the Automation Anywhere Client

### Installation

- Download the bot from Bot Store.
- Double click on <Bot Name>.msi and follow the installation instructions.

For first time users, the “Bot Store” folder is created under <AA Directory>/My Tasks (on your local disk).

Folder Structure

**Create the following folder structure of the content in the AA**

**Dir:**

```
<AA Directory>
  <My Tasks (Folder)>
    <Bot Store (Folder)>
      <Send Email-Automation Anywhere (Folder)>
        <My Tasks (Folder)>
          ▪ SMTP_Email_Template.atmx
        <Error Folder (Folder)>
          <Logs (Folder)>
          <Snapshots (Folder)>
        <Input Folder (Folder)>
          <Email_Templates (Folder)>
            ▪ Business_Completion_Template.txt
            ▪ Business_Exception_Template.txt
            ▪ System_Exception_Template.txt
```

### How to Use the Bot:

Use the following information to configure your bot:

Parameter Name	Type	Direction	Additional Info
vAttachment	String	Input	Provide file path to be send as email attachment. E.g. "\$AAApplicationPath\$\Automation Anywhere\My Tasks\Bot Store\Main_Task\Output Files\Report.xlsx"
vToEmail, vCCEmails	String	Input	Provide the email address of recipient, CC list
vUserEmail	String	Input	Provide the sender's email address
vEmailSubject	String	Input	Provide subject for email
vTaskStatus	String	Input	Decide usage of various templates
vErrorFolder	String	Input	Error Folder for logging purposes \$AAApplicationPath\$\Automation Anywhere\My Tasks\Bot Store\SMTP_Email_Template\Error
vErrorLogFileName	String	Input	Parametrized path for error logging. Helps in maintaining common log file for the whole process. To be passed from the Master Task
vEmailTemplateFilePath	String	Input	Folder path of the various scenarios' templates.

**Note:** For more details on input parameters look for [More Information](#) section below.

### Error Handling

Each Bot folder contains the below hierarchy.

<Error (Folder)>

<Log (Folder)>

Contains configurable csv file with error details

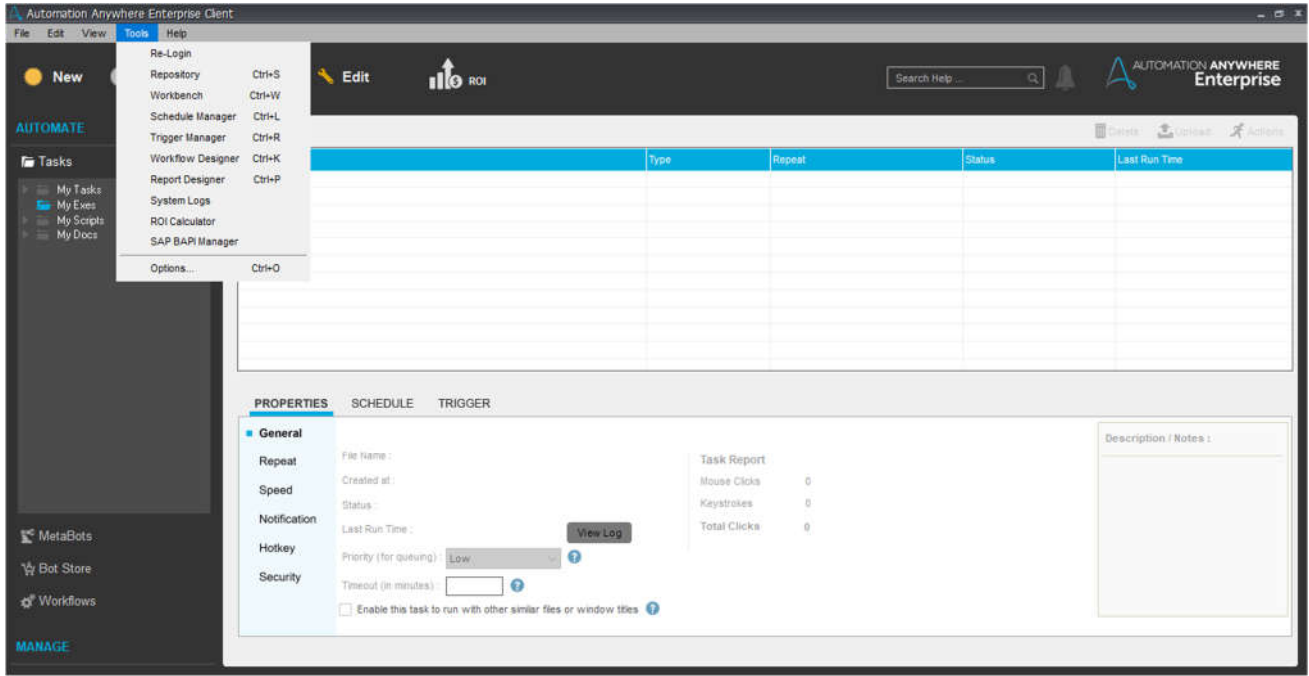
<Screenshots (Folder)>

Error screenshot in .png format

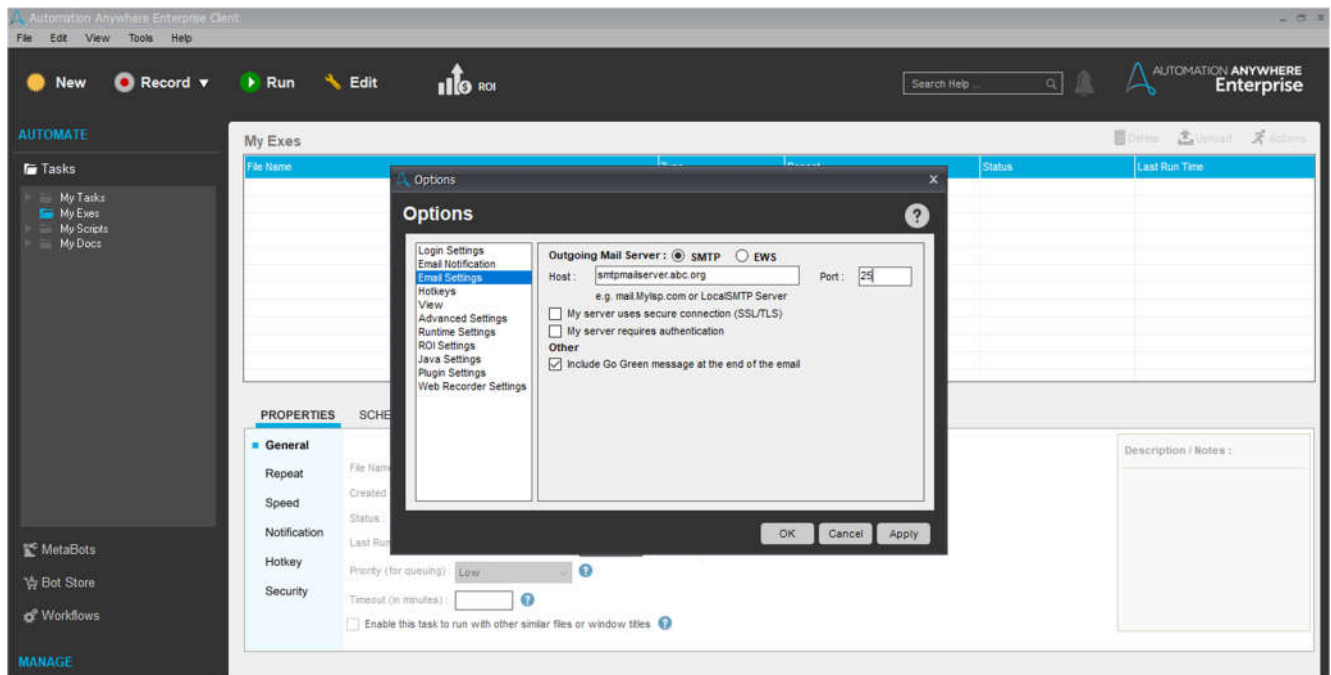
**\*\*Task Status of bot is set to failed in case of error.**

## More Information

- To setup outgoing mail server (SMTP) go to Tools>Options... in Automation Anywhere Enterprise Client as shown below.



- Go to Email Settings and set values for SMTP Server, Port and User Credentials (if required)



## Bot Deployment

