



**Extract Unique values from Semi or Unstructured Excel**

**Readme**

**Version 1.0**

**24/05/2023**



---

## Table of Contents

<b>1. Introduction</b>	<b>3</b>
1.1 Overview	3
1.2 Use Cases	3
<b>2. Requirements &amp; Prerequisites</b>	<b>4</b>
2.1 System Requirements	4
2.2 Prerequisites	4
<b>3. Getting Started</b>	<b>5</b>
3.1 Quick Start	5
3.1.1 Setup	Error! Bookmark not defined.
3.1.2 Configuration	5
<b>4. Support &amp; FAQs</b>	<b>6</b>
4.1 Support	6
4.2 FAQs	6
<b>Appendix A: Record of Changes</b>	<b>7</b>
<b>Appendix B: References</b>	<b>8</b>



---

## 1. Introduction

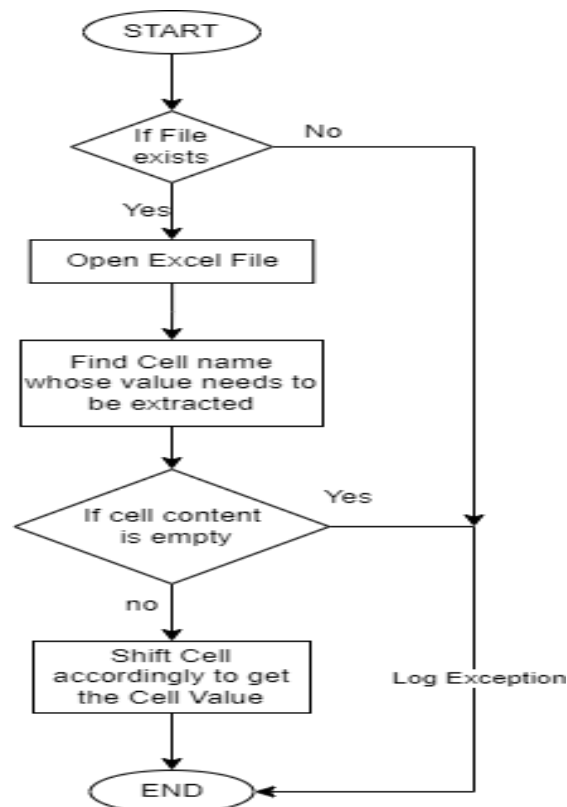
---

This document contains all the essential information for the user to make full use of this A360 Bot. It includes a description of the functions and capabilities and step-by-step procedures for the setup & configuration of the Bot.

### 1.1 Overview

This Bot will extract Cell Values from unstructured/semi-structured Excel files. The Bot read through the Excel file and finds the unique Keyword in the file along with the respective cell value and saves it in a variable.

### 1.2 Use cases





---

## 2. Requirements & Prerequisites

---

### 2.1 System Requirements

#### [Enterprise A2019 \(Cloud deployed\) and Community Edition device requirements.](#)

Review the machine hardware specifications, operating system versions, and browser types supported by Automation Anywhere Enterprise for creating and running bots and command packages as an Enterprise A2019 (Cloud deployed) or Community Edition user on your local machine.

### 2.2 Prerequisites

1. *User should have a A2019 installed to take a benefit of this automation.*
2. User should be use a Excel Advance Package – 6.10.4 Package.
3. User should be use Excel file is in Semi – structured/unstructured Format.



---

## 3. Getting Started

---

### 3.1 Quick Start

#### 3.1.1 Configuration and Use

1. Download the Bot from the Bot-store.
2. Check the downloaded bot in your local machine private/Public section.
3. Once Bot is downloaded you are good to go for a run.
4. Navigate to the Google Drive and check if the files available in the given folder.
5. Extracting cell value with corresponding cell name.

○ For Configuring the Bot –

INPUT VARIABLES: Input Variables to be mentioned in this Table				
Variable Name	Type	Mandatory	Purpose	Example Input
iStrInputFilePath	String	Mandatory	Input Excel File Path	User given path
iStrCellName	String	Mandatory	Cell Value to Find	
iStrProjectFolder	String	Mandatory	Input Excel File Path	User given path

OUTPUT VARIABLES: Output Variables to be mentioned in this Table.			
Variable Name	Type	Mandatory	Purpose
oStrErrorMessage	String	Mandatory	For Error Message
oNumErrorLineNumber	Number	Mandatory	For Error Line Number
oBoolSuccessFlag	Boolean	Mandatory	For error status



---

## 4. Support & FAQs

---

### 4.1 Support

Free bots are not officially supported. You can get access to Community Support through the following channels:

- You can get access to Community Support, connecting with other Automation Anywhere customers and developers on [APeople – the Bot Building Forum](#), the [Bot Store Support Forum](#), or the [Developers Everywhere Group](#).
- Automation Anywhere also provides a [Product Documentation portal](#) which can be accessed for more information about our products and guidance on [Enterprise A2019](#).

### 4.2 FAQs

For questions relating to Enterprise A2019: See the [Enterprise A2019 FAQs](#).



---

## Appendix A: Record of Changes

No.	Version Number	Date of Change	Author	Notes
1	1.0	26-Apr-2023	Predikly Technologies Pvt Ltd.	N/A



---

## Appendix B: References

No.	Topic	Reference Link
1	Overview of Enterprise A2019	Click <a href="#">here</a>
2	Guidance: Building basic A2019 bots	Click <a href="#">here</a>
3	Guidance: Building A2019 action packages	Click <a href="#">here</a>
4	APeople Community Forum	Click <a href="#">here</a>
5	Automation Anywhere University	Click <a href="#">here</a>