



Salesforce Login with REST Web Services

Readme

Version 1.0

24/05/2023



Table of Contents

1. Introduction	3
1.1 Overview	3
1.2 Use Cases	3
2. Requirements & Prerequisites	4
2.1 System Requirements	4
2.2 Prerequisites	4
3. Getting Started	5
3.1 Quick Start	5
3.1.1 Setup	Error! Bookmark not defined.
3.1.2 Configuration	5
4. Support & FAQs	7
4.1 Support	7
4.2 FAQs	7
Appendix A: Record of Changes	8
Appendix B: References	9



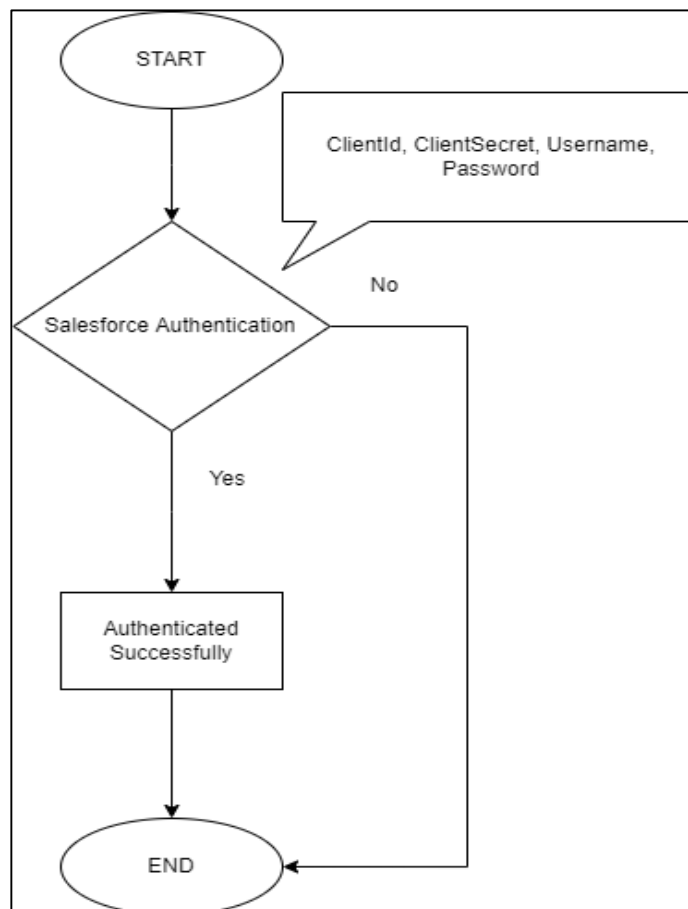
1. Introduction

This document contains all the essential information for the user to make full use of this A360 Bot. It includes a description of the functions and capabilities and step-by-step procedures for the setup & configuration of the Bot.

1.1 Overview

This Bot will log into Salesforce using REST web services.

1.2 Use cases





Requirements & Prerequisites

1.3 System Requirements

[Enterprise A2019 \(Cloud deployed\) and Community Edition device requirements.](#)

Review the machine hardware specifications, operating system versions, and browser types supported by Automation Anywhere Enterprise for creating and running bots and command packages as an Enterprise A2019 (Cloud deployed) or Community Edition user on your local machine.

1.4 Prerequisites

1. User should have a A2019 installed to take a benefit of this automation.
2. User should have use a REST Web Services – 3.11.1 package.



2. Getting Started

2.1 Quick Start

2.1.1 Configuration and Use

1. Download the Bot from the Bot-store.
2. Check the downloaded bot in your local machine private/Public section.
3. Once Bot is downloaded you are good to go for a run.
4. Login into salesforce application through REST Web Services.

○ **For Configuring the Bot –**

INPUT VARIABLES: Input Variables to be mentioned in this Table				
Variable Name	Type	Mandatory	Purpose	Example Input
iStrAuditLogFilePath	String	Mandatory	Logs the bot steps	
iStrErrorLogFilePath	String	Mandatory	Log the errors of exception in code	
iStrClientId	String	Mandatory	Client Id is required to log in to Salesforce	
iStrClientSecret	String	Mandatory	Client Secret is required to log in to Salesforce	
iStrPassword	String	Mandatory	Password is required to log in to Salesforce	
iStrUsername	String	Mandatory	Username is required to log in to Salesforce	
iStrSalesforceOrgURL	String	Mandatory	SalesforceOrgUrl is required to log in to Salesforce	



OUTPUT VARIABLES: Output Variables to be mentioned in this Table.			
Variable Name	Type	Mandatory	Purpose
oStrErrorMessage	String	Mandatory	Error Message of exception in the code.
oNumErrorLineNumber	Number	Mandatory	The error line number of exceptions in the code.
oBoolSuccessFlag	Boolean	Mandatory	The variable is set to true when the Bot is successful, otherwise set as false if the Bot fails.



4. Support & FAQs

4.1 Support

Free bots are not officially supported. You can get access to Community Support through the following channels:

- You can get access to Community Support, connecting with other Automation Anywhere customers and developers on [APeople – the Bot Building Forum](#), the [Bot Store Support Forum](#), or the [Developers Everywhere Group](#).
- Automation Anywhere also provides a [Product Documentation portal](#) which can be accessed for more information about our products and guidance on [Enterprise A2019](#).

4.2 FAQs

For questions relating to Enterprise A2019: See the [Enterprise A2019 FAQs](#).



Appendix A: Record of Changes

No.	Version Number	Date of Change	Author	Notes
1	1.0	24-May-2023	Predikly Technologies Pvt Ltd.	N/A



Appendix B: References

No.	Topic	Reference Link
1	Overview of Enterprise A2019	Click here
2	Guidance: Building basic A2019 bots	Click here
3	Guidance: Building A2019 action packages	Click here
4	APeople Community Forum	Click here
5	Automation Anywhere University	Click here