



Extracting Data from BigQuery

Readme

Version 1.0

05/06/2023

Table of Contents

1. Introduction	3
1.1 Overview	3
1.2 Use Cases	3
2. Requirements & Prerequisites	4
2.1 System Requirements	4
2.2 Prerequisites	4
3. Getting Started	5
3.1 Quick Start	5
3.1.1 Setup	Error! Bookmark not defined.
3.1.2 Configuration	5
4. Support & FAQs	6
4.1 Support	6
4.2 FAQs	6
Appendix A: Record of Changes	7
Appendix B: References	8

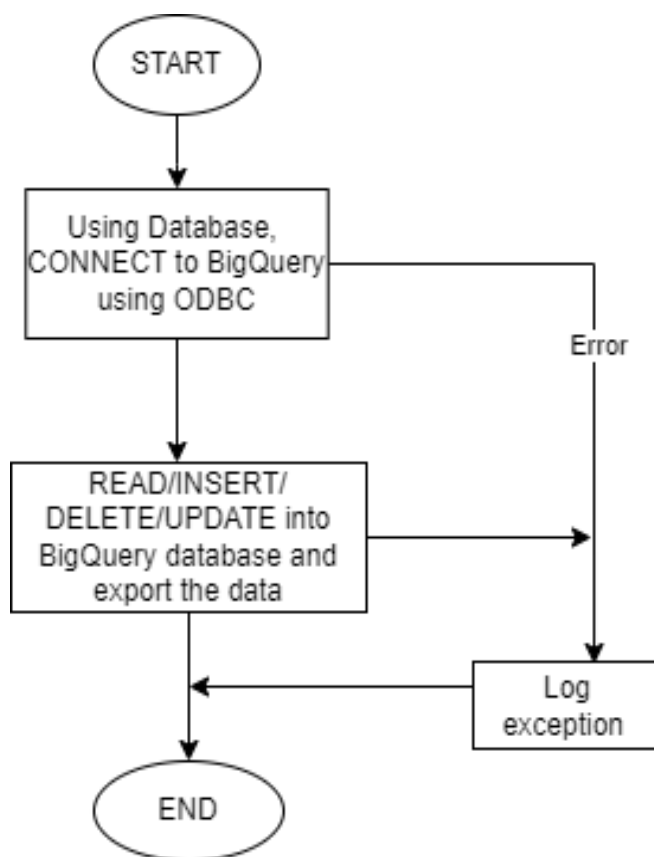
1. Introduction

This document contains all the essential information for the user to make full use of this A360 Bot. It includes a description of the functions and capabilities and step-by-step procedures for the setup & configuration of the Bot.

1.1 Overview

This task Bot uses a database to connect and export data from BigQuery. The user can Read, Insert, Delete, and Update the data of BigQuery as per their need.

1.2 Use cases



2. Requirements & Prerequisites

2.1 System Requirements

Enterprise A2019 (Cloud deployed) and Community Edition device requirements.

Review the machine hardware specifications, operating system versions, and browser types supported by Automation Anywhere Enterprise for creating and running bots and command packages as an Enterprise A2019 (Cloud deployed) or Community Edition user on your local machine.

2.2 Prerequisites

1. Complete the following task before use this task bot
 - a. Enable the Big Query API on Google Cloud Console, find below the link to enable
Link: <https://cloud.google.com/bigquery/docs/enable-transfer-service>
 - b. Download and Install the Simba ODBC driver, find below the link of ODBC drivers
Link: <https://cloud.google.com/bigquery/docs/reference/odbc-jdbc-drivers>
 - c. Establish connection of ODBC driver with Big Query
Link: <https://cloud.google.com/community/tutorials/bigquery-from-excel>
2. User should have a A2019 installed to take a benefit of this automation.
3. User should have use a google Drive – 2.8.1 package.
4. User should have access to required file folders.

3. Getting Started

3.1 Quick Start

3.1.1 Configuration and Use

1. Download the Bot from the Bot-store.
2. Check the downloaded bot in your local machine private/Public section.
3. Once Bot is downloaded you are good to go for a run.
4. Complete the prerequisite process.

(Note : The following input variable which are from credentials vault are taken as a Assigned String value for this bot)

- For Configuring the Bot –

INPUT VARIABLES: Input Variables to be mentioned in this Table				
Variable Name	Type	Mandatory	Purpose	Example Input
iFolderPath	String	Mandatory	Path to save the .csv file(s).	
iStrProjectFolder	String	Mandatory	Folder path where you logs are generated	e.g. C:\BotStore\DownloadFilesFromGoogleDrive

OUTPUT VARIABLES: Output Variables to be mentioned in this Table.			
Variable Name	Type	Mandatory	Purpose
oStrErrorMessage	String	Mandatory	For Error Message
oNumErrorLineNumber	Number	Mandatory	For Error Line Number

4. Support & FAQs

4.1 Support

Free bots are not officially supported. You can get access to Community Support through the following channels:

- You can get access to Community Support, connecting with other Automation Anywhere customers and developers on [APeople – the Bot Building Forum](#), the [Bot Store Support Forum](#), or the [Developers Everywhere Group](#).
- Automation Anywhere also provides a [Product Documentation portal](#) which can be accessed for more information about our products and guidance on [Enterprise A2019](#).

4.2 FAQs

For questions relating to Enterprise A2019: See the [Enterprise A2019 FAQs](#).

Appendix A: Record of Changes

No.	Version Number	Date of Change	Author	Notes
1	1.0	05-06-2023	Predikly Technologies Pvt Ltd.	N/A

Appendix B: References

No.	Topic	Reference Link
1	Overview of Enterprise A2019	Click here
2	Guidance: Building basic A2019 bots	Click here
3	Guidance: Building A2019 action packages	Click here
4	APeople Community Forum	Click here
5	Automation Anywhere University	Click here