



Google Sheets Automation

Readme

Version 1.0

05/06/2023

Table of Contents

1. Introduction.....	3
1.1 Overview.....	3
1.2 Use cases.....	3
2. Requirements & Prerequisites.....	4
2.1 System Requirements.....	4
2.2 Prerequisites.....	4
3. Getting Started.....	5
3.1 Quick Start.....	5
3.1.1 Configuration and Use.....	5
4. Support & FAQs.....	6
4.1 Support.....	6
4.2 FAQs.....	6
Appendix A: Record of Changes	7
Appendix B: References.....	8

1. Introduction

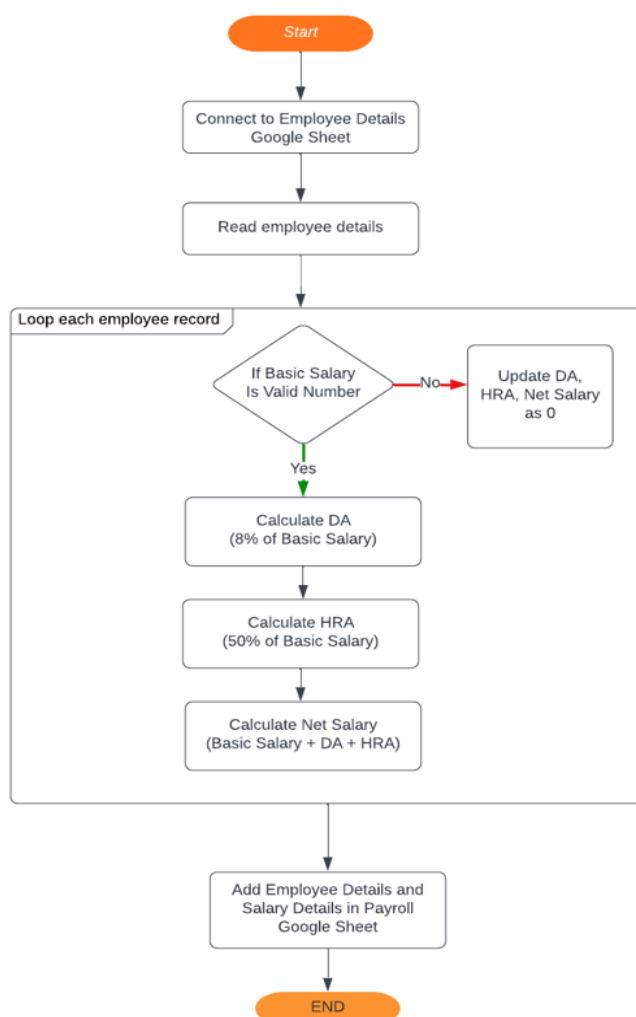
This document contains all the essential information for the user to make full use of this A360 Bot. It includes a description of the functions and capabilities and step-by-step procedures for the setup & configuration of the Bot.

1.1 Overview

This Bot is used to automate Google sheet functionality. It uses Google sheet as input and performs arithmetic operations on data retrieved from Google sheet. After the arithmetic operation bot will write updated data to other Google sheets.

1.2 Use cases

Workflow for Google Sheet Automation



2. Requirements & Prerequisites

2.1 System Requirements

[Enterprise A2019 \(Cloud deployed\) and Community Edition device requirements.](#)

Review the machine hardware specifications, operating system versions, and browser types supported by Automation Anywhere Enterprise for creating and running bots and command packages as an Enterprise A2019 (Cloud deployed) or Community Edition user on your local machine.

2.2 Prerequisites

1. User should have a A2019 installed to take a benefit of this automation.
2. User should have use a G-Drive API – 4 package.
3. Input Sheet contains employee information along with Basic Salary.
4. Basic Salary column contains numeric data.
5. Input file contains “Employees” as worksheet name and it contains employee details.
6. Output file contains “Salary Details” worksheet to hold employee details with payroll details.
7. DA is 8% of basic salary.
8. HRA is 50% of basic salary.
9. Net Salary = Basic Salary + DA + HRA

3. Getting Started

3.1 Quick Start

3.1.1 Configuration and Use

1. Download the Bot from the Bot-store.
2. Check the downloaded bot in your local machine private/Public section.
3. Once Bot is downloaded you are good to go for a run.
4. Navigate to the Google Drive and check if the files available in the given folder.
5. Download the files to the Local drive.

○ For Configuring the Bot –

INPUT VARIABLES: Input Variables to be mentioned in this Table				
Variable Name	Type	Mandatory	Purpose	Example Input
Google Sheet	String	Mandatory	Input G-Sheet name containing employee details and basic salary	

OUTPUT VARIABLES: Output Variables to be mentioned in this Table.			
Variable Name	Type	Mandatory	Purpose
Google Sheet	String	Mandatory	Output G-Sheet name containing employee payroll details including DA, HRA and Net Salary.

4. Support & FAQs

4.1 Support

Free bots are not officially supported. You can get access to Community Support through the following channels:

- You can get access to Community Support, connecting with other Automation Anywhere customers and developers on [APeople – the Bot Building Forum](#), the [Bot Store Support Forum](#), or the [Developers Everywhere Group](#).
- Automation Anywhere also provides a [Product Documentation portal](#) which can be accessed for more information about our products and guidance on [Enterprise A2019](#).

4.2 FAQs

For questions relating to Enterprise A2019: See the [Enterprise A2019 FAQs](#).

Appendix A: Record of Changes

No.	Version Number	Date of Change	Author	Notes
1	1.0	05-Jun-2023	Predikly Technologies Pvt Ltd.	N/A

Appendix B: References

No.	Topic	Reference Link
1	Overview of Enterprise A2019	Click here
2	Guidance: Building basic A2019 bots	Click here
3	Guidance: Building A2019 action packages	Click here
4	APeople Community Forum	Click here
5	Automation Anywhere University	Click here