



Language Translator using Google API (Using Python Library)

Readme

Version 1.0

04/05/2023

Table of Contents

1. Introduction.....	3
1.1 Overview.....	3
1.2 Use cases.....	3
2. Requirements & Prerequisites.....	4
2.1 System Requirements.....	4
2.2 Prerequisites.....	4
3. Getting Started.....	5
3.1 Quick Start.....	5
3.1.1 Configuration and Use.....	5
4. Support & FAQs.....	7
4.1 Support.....	7
4.2 FAQs.....	7
Appendix A: Record of Changes	8
Appendix B: References.....	9

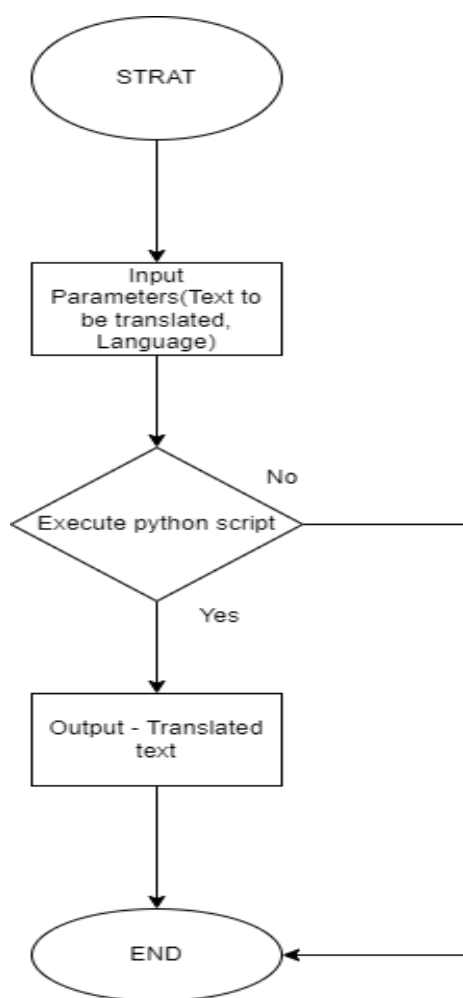
1. Introduction

This document contains all the essential information for the user to make full use of this A360 Bot. It includes a description of the functions and capabilities and step-by-step procedures for the setup & configuration of the Bot.

1.1 Overview

This Bot will be used to translate the input string of one language to another language.

1.2 Use cases



2. Requirements & Prerequisites

2.1 System Requirements

[Enterprise A2019 \(Cloud deployed\) and Community Edition device requirements.](#)

Review the machine hardware specifications, operating system versions, and browser types Automation Anywhere Enterprise supports creating and running bots and command packages as an Enterprise A2019 (Cloud deployed) or Community Edition user on your local machine.

2.2 Prerequisites

The user should have an A2019 installed to take benefit of this automation.

Python “Translate” library must be installed.

The user should have used a python -2.12.0 and above package.

3. Getting Started

3.1 Quick Start

3.1.1 Configuration and Use

- Download the Bot from the Bot-store.
- Check the downloaded bot in your local machine's private/Public section.
- Once the Bot is downloaded you are good to go for a run.
- Taking two input parameters, to translate to language and text to be translated language.

○ For Configuring the Bot –

INPUT VARIABLES: Input Variables to be mentioned in this Table				
Variable Name	Type	Mandatory	Purpose	Example Input
iStrProjectFolder	String	Mandatory	Logs the bot steps	
iStrTranslateToLanguage	String	Mandatory	Enter the language in which you want to translate	Hello
iStrTextToBeTranslated	String	Mandatory	Enter the text you want to translate	German

OUTPUT VARIABLES: Output Variables to be mentioned in this Table.			
Variable Name	Type	Mandatory	Purpose
oStrErrorMessage	String	Mandatory	Error Message of exception in the code.

oNumErrorLineNumber	Number	Mandatory	The error line number of exceptions in the code.
oBoolSuccessFlag	Boolean	Mandatory	The variable is set to true when the Bot is successful, otherwise set as false if the Bot fails.

4. Support & FAQs

4.1 Support

Free bots are not officially supported. You can get access to Community Support through the following channels:

- You can get access to Community Support, connecting with other Automation Anywhere customers and developers on APeople – the Bot Building Forum, the Bot Store Support Forum, or the Developers Everywhere Group.
- Automation Anywhere also provides a Product Documentation portal which can be accessed for more information about our products and guidance on Enterprise A2019.

4.2 FAQs

Instructions: Add any Frequently Asked Questions related to Bot that you think would be helpful to the customer

For questions relating to Enterprise A2019: See the [Enterprise A2019 FAQs](#).

Appendix A: Record of Changes

Instructions: Provide information on the version number, the date of the version, the author/owner of the version, and a brief description of the reason for creating the revised version.

No.	Version Number	Date of Change	Author	Notes
1	1.0	04-05-2023	Predikly Technologies Pvt Ltd.	N/A

Appendix B: References

No.	Topic	Reference Link
1	Overview of Enterprise A2019	Click here
2	Guidance: Building basic A2019 bots	Click here
3	Guidance: Building A2019 action packages	Click here
4	APeople Community Forum	Click here
5	Automation Anywhere University	Click here