



Word to PDF Converter using DLL

Readme

Version 1.0

06/06/2023

Table of Contents

1. Introduction.....	3
1.1 Overview.....	3
1.2 Use cases.....	3
2. Requirements & Prerequisites.....	4
2.1 System Requirements.....	4
2.2 Prerequisites.....	4
3. Getting Started.....	5
3.1 Quick Start.....	5
3.1.1 Configuration and Use.....	5
4. Support & FAQs.....	6
4.1 Support.....	6
4.2 FAQs.....	6
Appendix A: Record of Changes	7
Appendix B: References.....	8

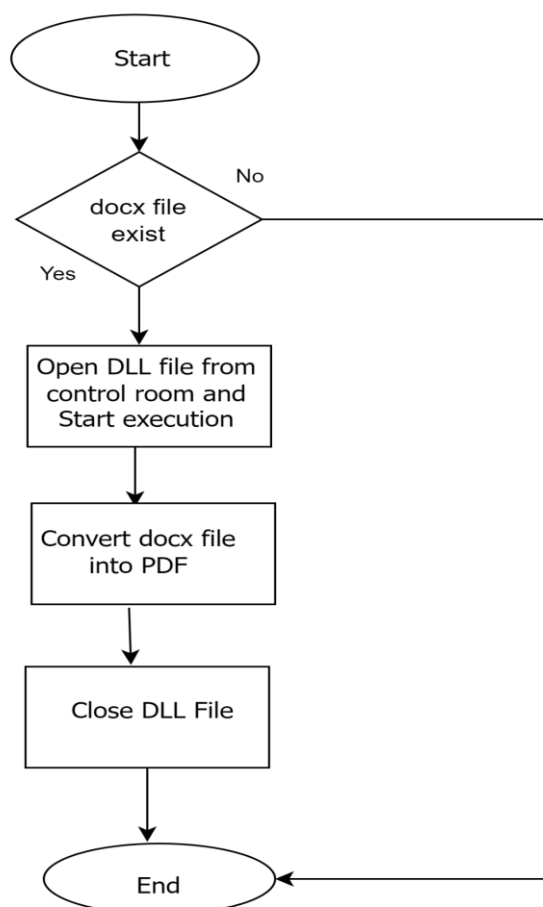
1. Introduction

This document contains all essential information for the user to make full use of this A360 Bot. It includes a description of the functions and capabilities and step-by-step procedures for setup & configuration of the Bot.

1.1 Overview

The Bot will be used to Convert multiple word files (docx) to PDF format. User requires to provide the folder path containing word documents as input and run the Bot. The Bot will convert all the word files with a .docx extension to a PDF file format.

1.2 Use cases



2. Requirements & Prerequisites

2.1 System Requirements

[Enterprise A2019 \(Cloud deployed\) and Community Edition device requirements.](#)

Review the machine hardware specifications, operating system versions, and browser types supported by Automation Anywhere Enterprise for creating and running bots and command packages as an Enterprise A2019 (Cloud deployed) or Community Edition user on your local machine.

2.2 Prerequisites

User should have a A2019 installed to take a benefit of this automation.

3. Getting Started

3.1 Quick Start

3.1.1 Configuration and Use

- Download the Bot from the Bot-store.
- Check the downloaded bot in your local machine private/Public section.
- Once Bot is downloaded you are good to go for a run.

○ For Configuring the Bot –

INPUT VARIABLES: Input Variables to be mentioned in this Table				
Variable Name	Type	Mandatory	Purpose	Example Input
iStrProjectFolder	String	Mandatory	Folder where logs are generated and also bot will convert Word to pdf from this folder	User given path For(e.g.D:\Project name)

OUTPUT VARIABLES: Output Variables to be mentioned in this Table.			
Variable Name	Type	Mandatory	Purpose
oBolBotStatus	Bool	Mandatory	Bot status
oNumErrorLineNumber	Number	Mandatory	Line no. on which error occurred
oStrErrorMessage	String	Mandatory	Error message

4. Support & FAQs

4.1 Support

Free bots are not officially supported. You can get access to Community Support through the following channels:

- You can get access to Community Support, connecting with other Automation Anywhere customers and developers on [APeople](#) – the [Bot Building Forum](#), the [Bot Store Support Forum](#), or the [Developers Everywhere Group](#).
- Automation Anywhere also provides a [Product Documentation portal](#) which can be accessed for more information about our products and guidance on [Enterprise A2019](#).

4.2 FAQs

Instructions: Add any Frequently Asked Questions related to Bot that you think would be helpful to the customer

For questions relating to Enterprise A2019: See the [Enterprise A2019 FAQs](#).

Appendix A: Record of Changes

Instructions: Provide information on the version number, the date of the version, the author/owner of the version, and a brief description of the reason for creating the revised version.

No.	Version Number	Date of Change	Author	Notes
1	1.0	06-06-2023	Predikly Technologies Pvt Ltd.	N/A

Appendix B: References

No.	Topic	Reference Link
1	Overview of Enterprise A2019	Click here
2	Guidance: Building basic A2019 bots	Click here
3	Guidance: Building A2019 action packages	Click here
4	APeople Community Forum	Click here
5	Automation Anywhere University	Click here