



# Universal Timezone Converter

## Readme

---

Version 1.0

29/02/2024

## Table of Contents

<b>1. Introduction .....</b>	<b>3</b>
1.1 Overview .....	3
1.2 Use cases .....	5
<b>2. Requirements &amp; Prerequisites .....</b>	<b>6</b>
2.1 System Requirements .....	6
2.2 Prerequisites .....	6
<b>3. Getting Started .....</b>	<b>7</b>
3.1 Quick Start .....	7
3.1.1 Setup .....	7
3.1.2 Configuration .....	7
<b>4. Logs .....</b>	<b>8</b>
<b>5. Support &amp; FAQs .....</b>	<b>9</b>
5.1 Support .....	9
5.2 FAQs .....	9
<b>Appendix A: Record of Changes .....</b>	<b>10</b>
<b>Appendix B : References .....</b>	<b>11</b>

# 1. Introduction

This document contains all the necessary information for the user to make full use of this Universal Timezone Converter bot. In this manual, you will find a description of the Universal Timezone Converters' functions and capabilities, as well as step-by-step procedures for setup & configuration of the bot.

## 1.1 Overview

By using this bot, you can convert the date and time from the source timezone to the target timezone in one action.

This bot is being developed to address and fix the timezone conversion issue.

- **Problem Statement:** There is an issue when using shortcut abbreviations name in timezone conversion. For example, when converting IST to UTC timezone by default it will take "Indian Standard Time". In the table below, you will find that we have multiple matches with abbreviations "IST" name.



Abbr. Name	Full Name
IST	Indian Standard Time
IST	Irish Standard Time
IST	Israel Standard Time

Similarly, we have some timezone as shown in the table below.

Abbr. Name	Full Name
ACT	Acre Time
ACT	ASEAN Common Time
AMT	Amazon Time
AMT	Armenia Time
AST	Arabia Standard Time
AST	Atlantic Standard Time
BST	Bangladesh Standard Time
BST	Bougainville Standard Time
BST	British Summer Time
CDT	Central Daylight Time
CDT	Cuba Daylight Time
CST	Central Standard Time
CST	China Standard Time
CST	Cuba Standard Time

ECT	Eastern Caribbean Time
ECT	Ecuador Time
GST	South Georgia and the South Sandwich Islands Time
GST	Gulf Standard Time
LHST	Lord Howe Standard Time
LHST	Lord Howe Summer Time
MST	Malaysia Standard Time
MST	Mountain Standard Time
SST	Samoa Standard Time
SST	Singapore Standard Time

- **High-level understanding:** This bot makes it easy for you to change a date and time to a different timezone simply by entering the time and date in a specific format and the source and target timezones, and it will generate the appropriate target time and date.
- **Example of a Sample Input & Output**

Input values



☒ Set iStrRootLogDirectory

C:\AutomationAnywhere
(x)

Default Logs Location C:\AutomationAnywhere

☒ Set iStrSourceTime

2024-02-20 11:00:00
(x)

Enter the time in yyyy-MM-dd HH:mm:ss format. The system date and time are considered if the value is Empty

☒ Set iStrSourceTimeZone

Indian Standard Time
(x)

Visit [https://en.wikipedia.org/wiki/List\\_of\\_time\\_zone\\_abbreviations](https://en.wikipedia.org/wiki/List_of_time_zone_abbreviations) and select receptive name to source and destination time zones

☒ Set iStrTargetTimeZone

Central Standard Time (Central America)
(x)

When the value is Empty, Greenwich Mean Time or Universal Time Coordinated will be default time zone

Repetition (optional)

Do not repeat
▼

Fig 1.0:Sample input



Fig1.1:Creating a variable for the dictionary key and mapping it to that variable.

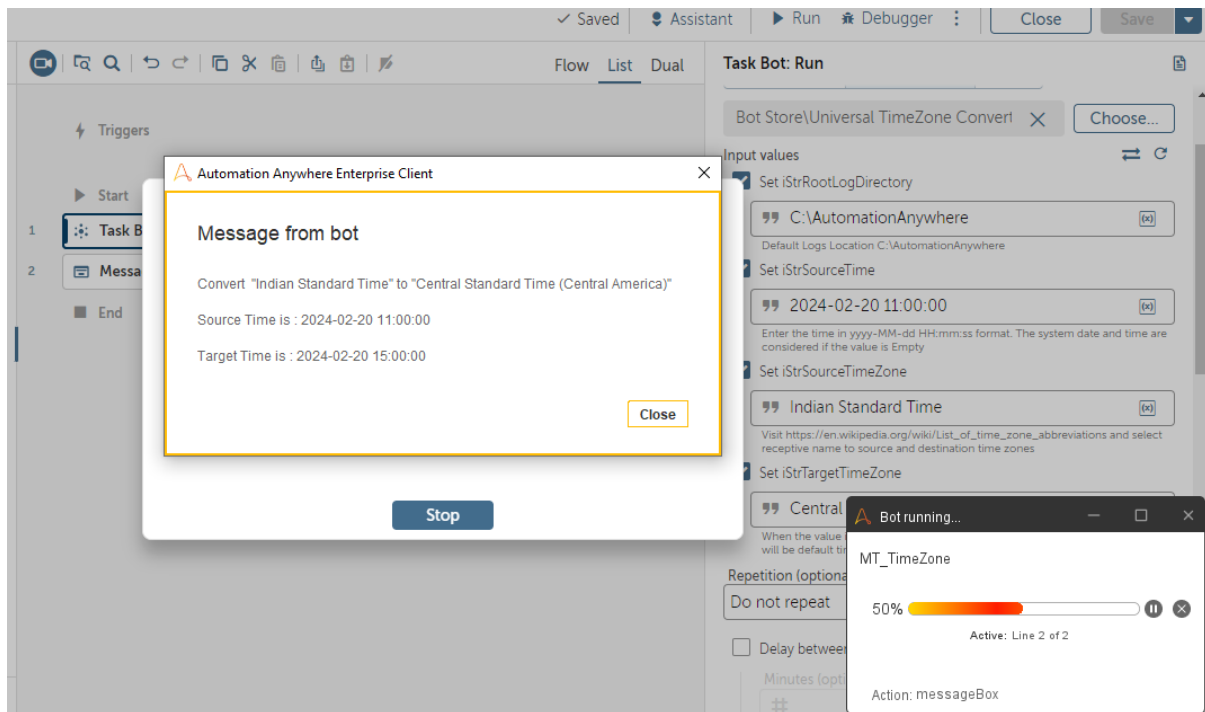


Fig1.2:Sample Output

## 1.2 Use cases

1. We can use the time zone conversion to schedule the meeting at a reasonable time in their local time.
2. To post team wishes in a different time zone, you can use a time zone conversion.

## 2. Requirements & Prerequisites

---

### 2.1 System Requirements

Below are the minimum requirements for your system:

Hardware Requirements

Processor	RAM	Storage (Free Space)	Network
Intel Core i3 2.6 GHz with 4 multi-cores or higher	4 GB minimum 8 GB recommended	32 GB	1 GbE

### 2.2 Prerequisites

The Automation Anywhere Control Room version is as follows:

- Automation Anywhere Bot Agent is 21.250 or above.
- Automation Anywhere 360 build version is 18345 or above.

## 3. Getting Started

### 3.1 Quick Start

#### 3.1.1 Setup

The only setup required for this task is to import it. Once it has been imported into the bot store folder in AA360, you can begin using it immediately.

#### 3.1.2 Configuration

Pass the below variables as input to the bot.

INPUT VARIABLES: Input Variables to be mentioned in this Table				
Variable Name	Type	Mandatory	Purpose	Example Input
iStrRootLogDirectory	String		Log file folder Structure	C:\AutomationAnywhere\
iStrSourceTime	String		Specify the timestamp in the format of "yyyy-MM-dd HH:mm:ss" by entering the date and time you wish to convert	2024-02-14 10:00:00
iStrSourceTime	String		Specify the timestamp in the format of "yyyy-MM-dd HH:mm:ss" by entering the date and time you wish to convert	2024-02-14 10:00:00
iStrTargetTimeZone	String		For conversion, enter the target timezone	Pacific Standard Time (North America)

Note:

- The default timezone is "UTC", if "iStrTargetTimeZone" string contains empty value.
- The default log folder path is "C:/AutomationAnywhere", if "iStrRootLogDirectory" String is empty.
- The default date & time is "local machine System data & time", if "iStrSourceTime" string is empty.

OUTPUT VARIABLES: Output Variables to be mentioned in this Table.				
Variable Name	Type	Mandatory	Purpose	Example Output
oStrVBSOutput	String	-	Valid completions contain "Date & Time". Else contains the error.	

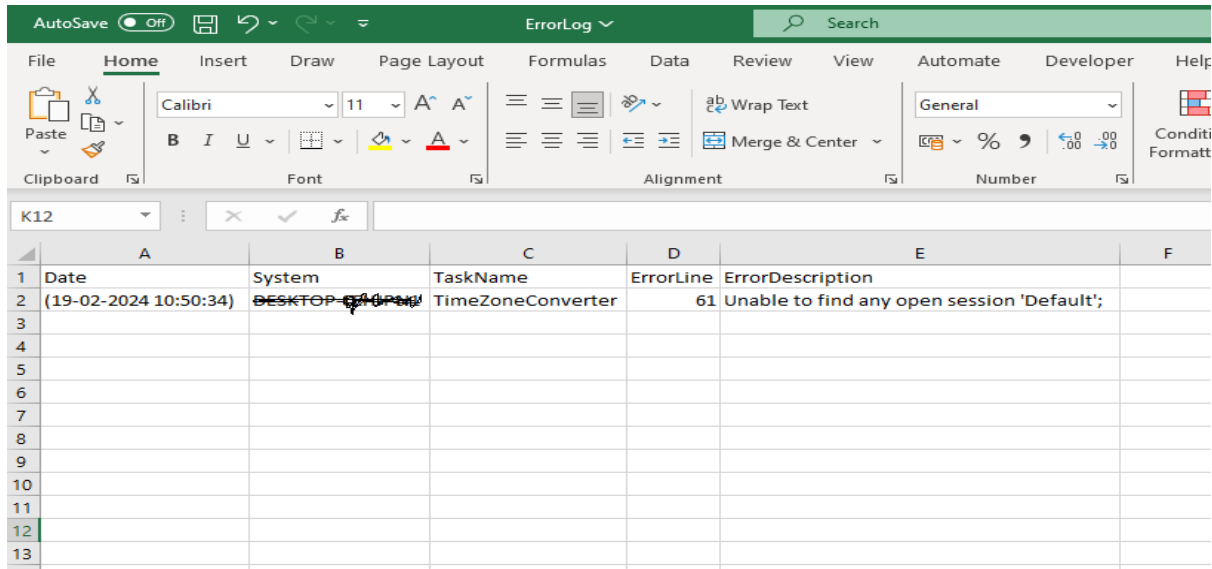
## 4. Logs

In case an error occurs, Error Logs & Screenshots will be generated below the Path.

iStrRootLogDirectory : C:\Automation Anywhere\Amiseq

Error Logs folder path is “C:\Automation Anywhere\Amiseq\Current Date\ErrorLog\ ErrorLog.csv”

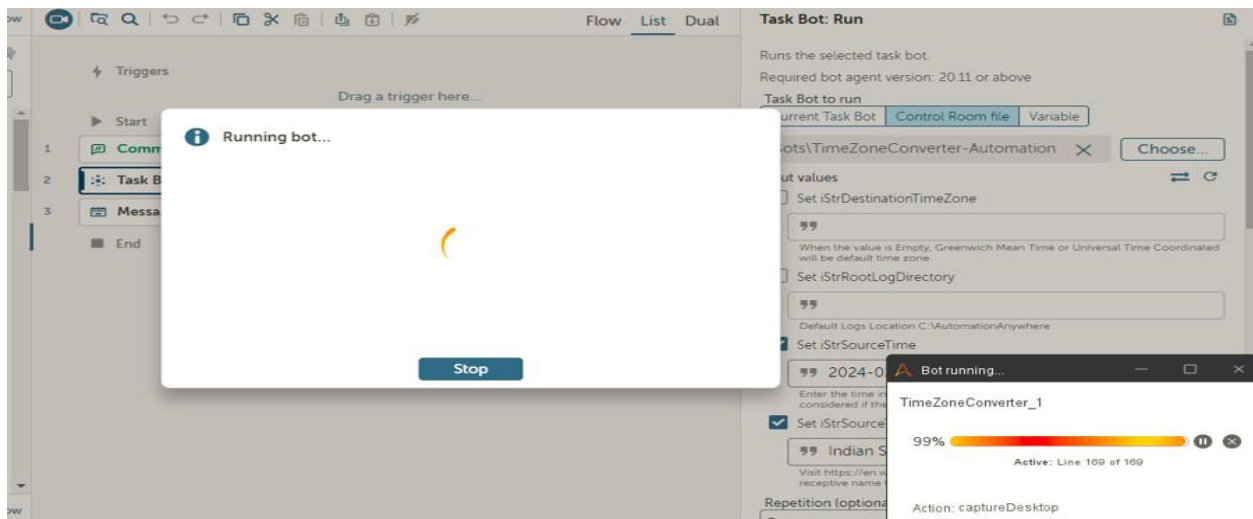
Example Error log file:



	A	B	C	D	E	F
1	Date	System	TaskName	ErrorLine	ErrorDescription	
2	(19-02-2024 10:50:34)	DESKTOP-9740PMU	TimeZoneConverter	61	Unable to find any open session 'Default';	
3						
4						
5						
6						
7						
8						
9						
10						
11						
12						
13						

Screenshot folder path is “C:\Automation Anywhere\Amiseq\Current Date\Snapshots\Snapshots\_HHMMSS.png”.

Example Screenshot file:





## 5. Support & FAQs

---

### 5.1 Support

Free bots are not officially supported. You can get access to Community Support through the following channels:

- You can get access to Community Support, connecting with other Automation Anywhere customers and developers on [APeople](#) – the [Bot Building Forum](#), the [Bot Store Support Forum](#), or the [Developers Everywhere Group](#).
- Automation Anywhere also provides a [Product Documentation portal](#) which can be accessed for more information about our products and guidance on [Enterprise A2019](#).

### 5.2 FAQs

Q: Can I make changes to this bot?

A: Absolutely. Free bots are for you to make use of, customize, and/or include in your builds as you see fit.

Q: Can I upgrade the packages for this bot?

A: Yes – but know that the bot was created/tested on a specific package version. Any modifications to that may result in unexpected outcomes – so make sure to test the bot/subtask after making any package version modifications.

Q: How can I change the output format of the bot?

A: When calling a subtask, the return value is always of type dictionary, and the value(s) returned from the subtask can be access through their specific variable names as a key within the dictionary. Once that value has been returned, the resulting could be string.

## Appendix A: Record of Changes

No.	Version Number	Date of Change	Author	Notes
1	1.0	29/02/2024	Suman Pasupuleti	Initial release of Bot

## Appendix B: References

No.	Topic	Reference Link
1	Overview of Enterprise A2019	Click <a href="#">here</a>
2	Guidance: Building basic A2019 bots	Click <a href="#">here</a>
3	Guidance: Building A2019 action packages	Click <a href="#">here</a>
4	APeople Community Forum	Click <a href="#">here</a>
5	Automation Anywhere University	Click <a href="#">here</a>